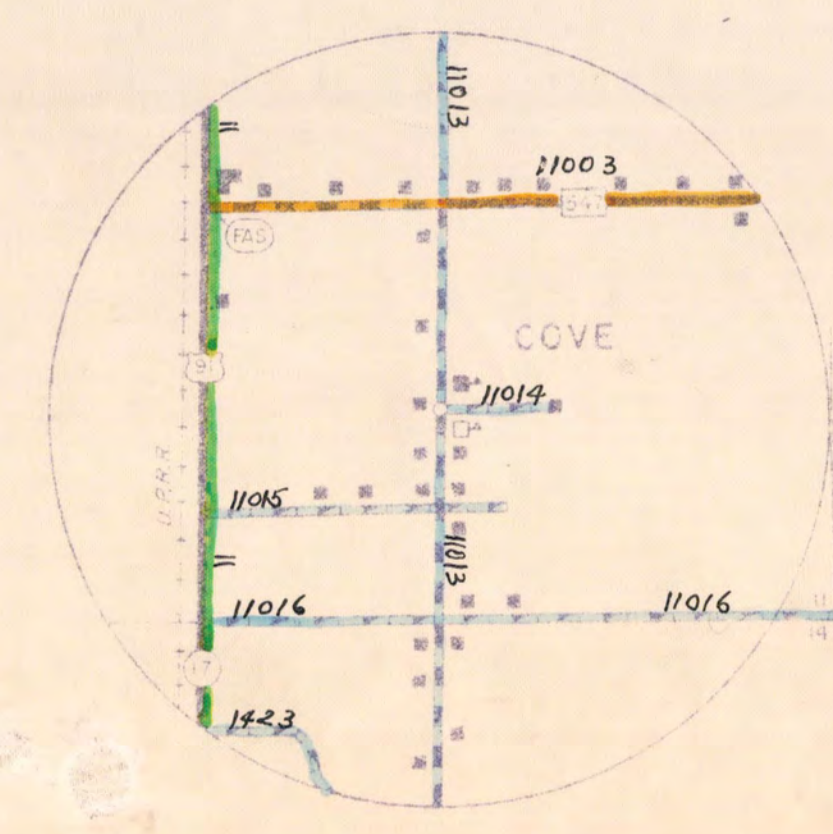
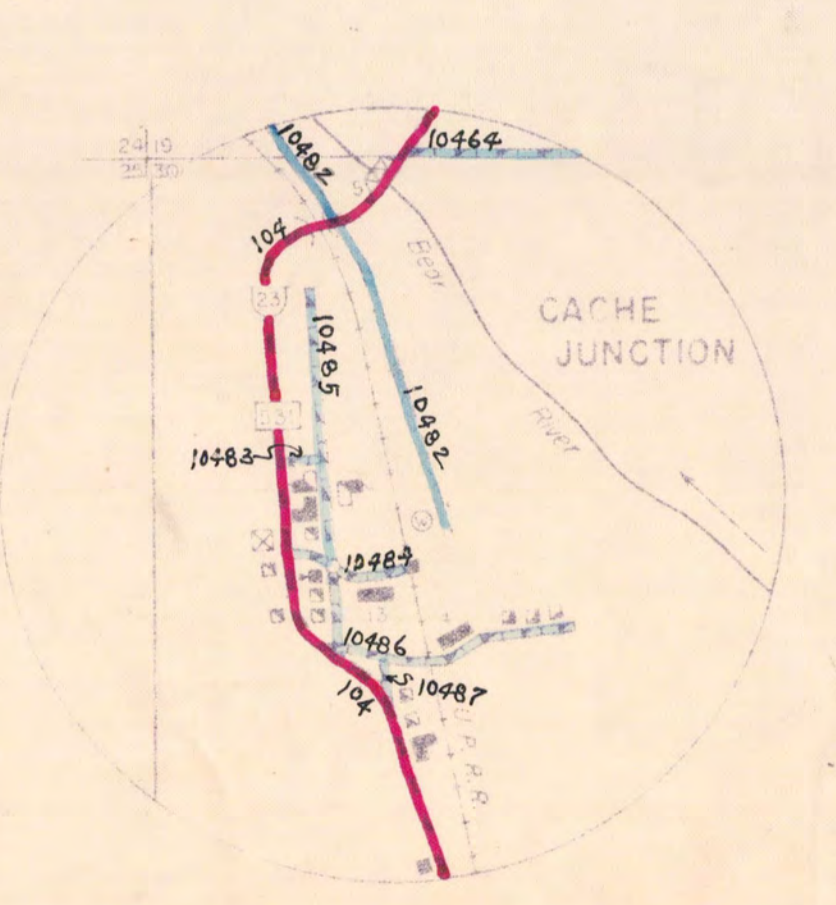
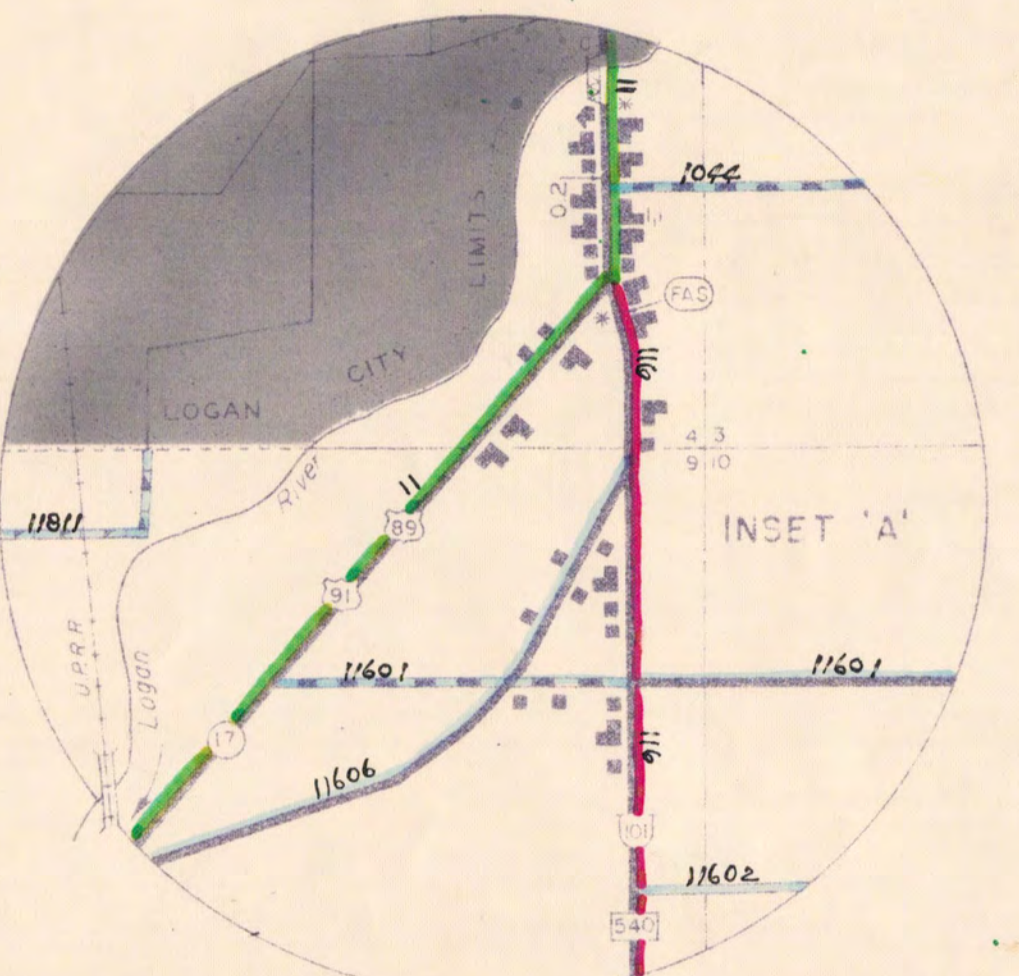
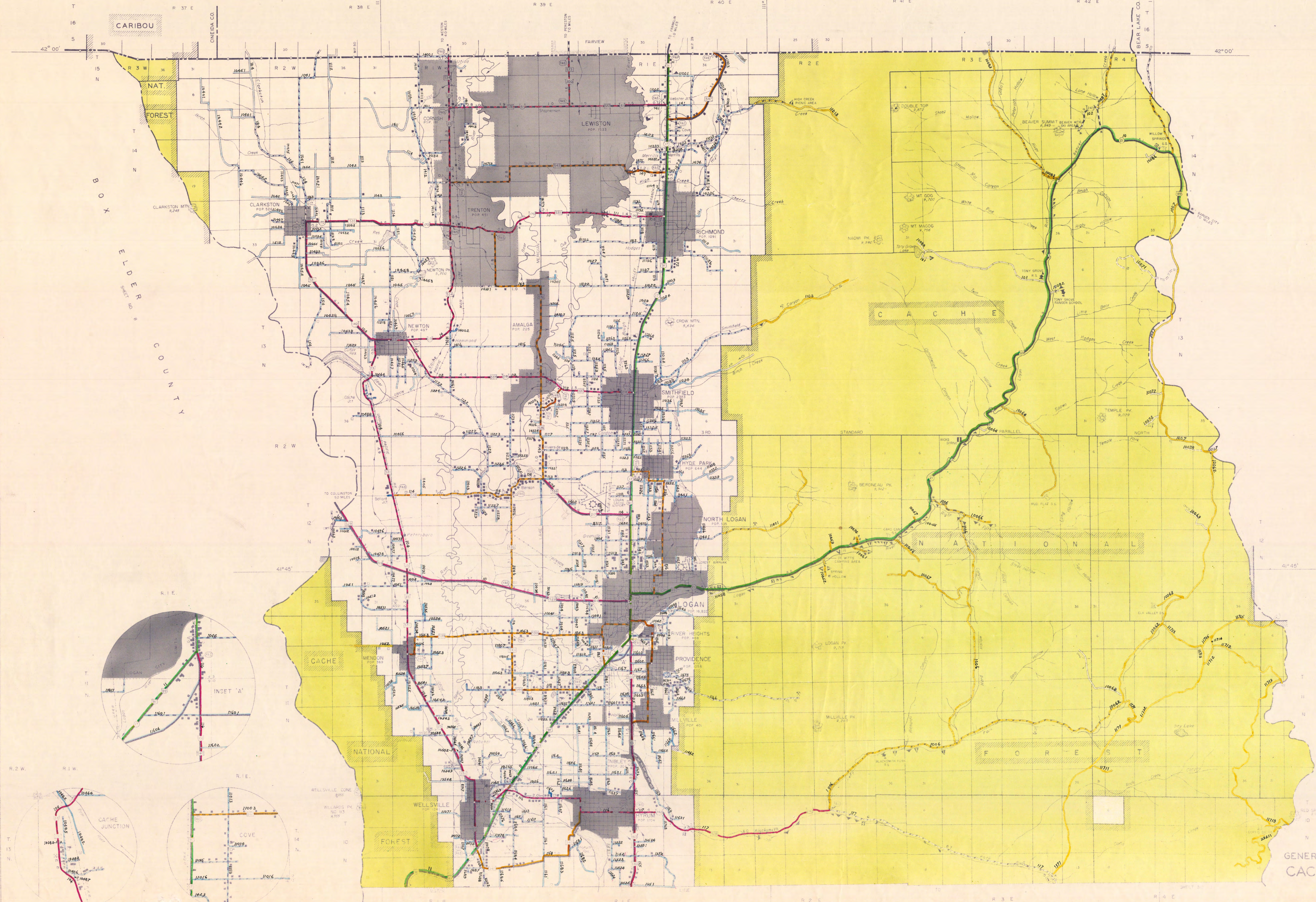


I D A H O

F R A N K L I N C O U N T Y

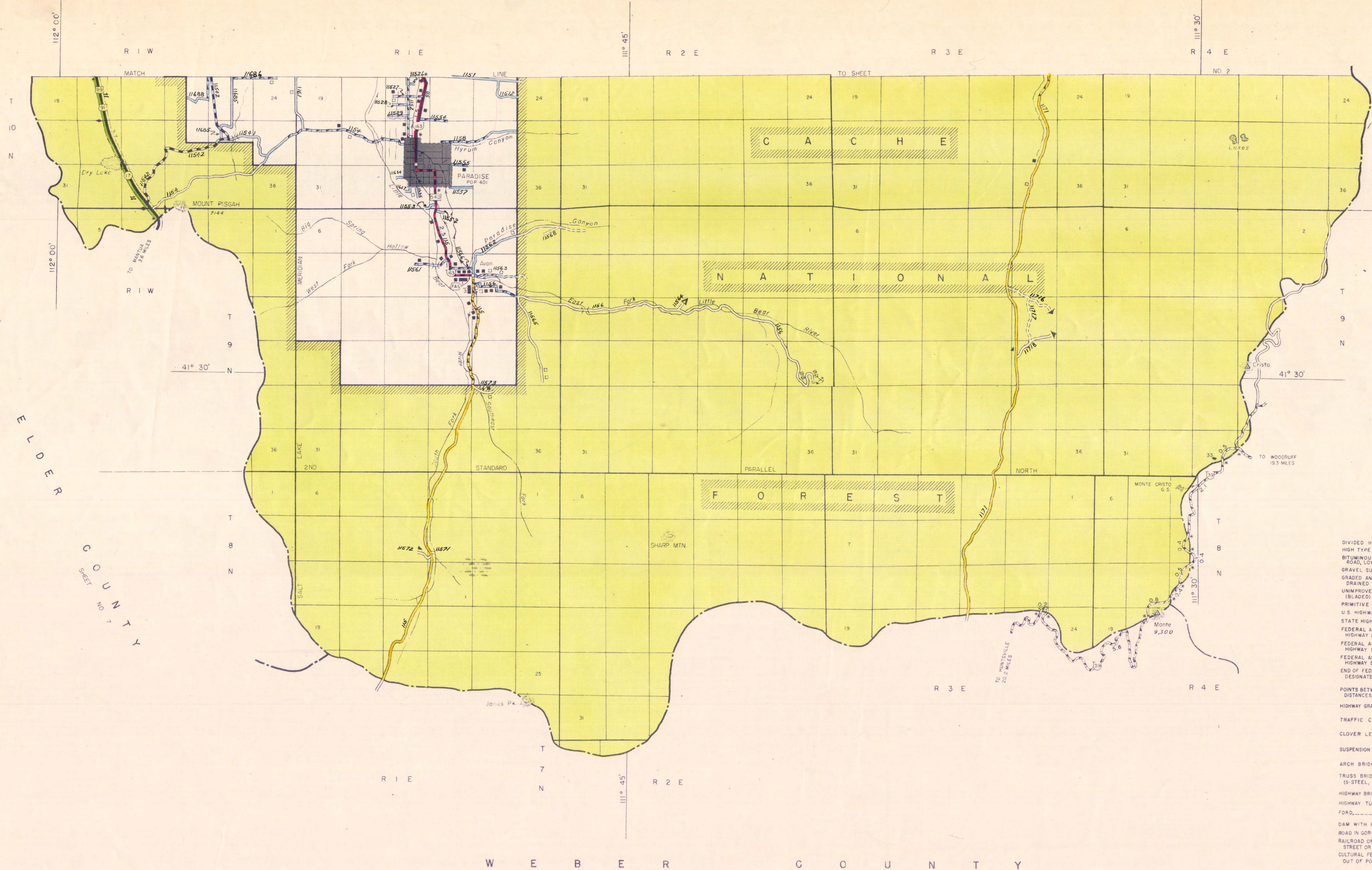


SCALE FOR ENLARGED

GENERAL HIGHWAY  
CACHE COUNTY  
UTAH  
SCALE  
1955  
POLYCONIC PROJECTION

SHEET NO. 1  
R I C H C O U N T Y





BOX ELDER COUNTY SHEET NO. 8

RICH COUNTY SHEET NO. 2

WEBER COUNTY

COLOR CODE

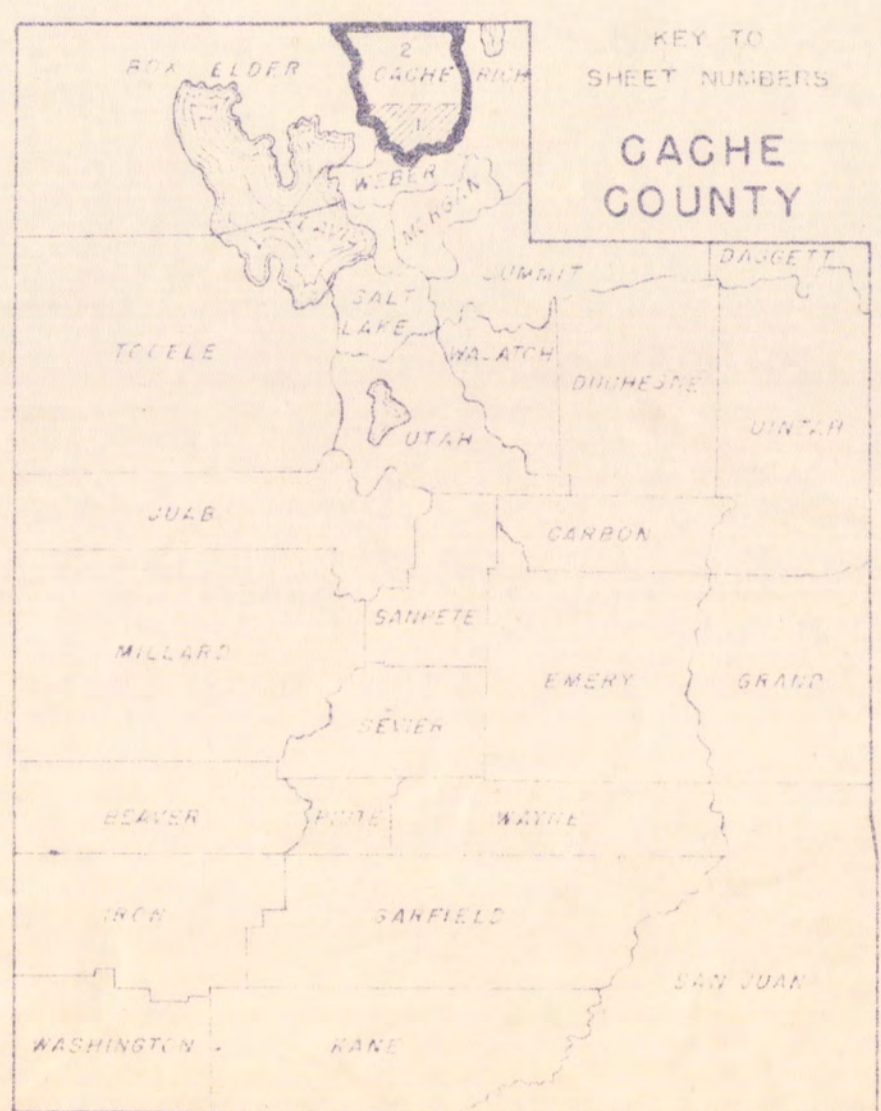
- NATIONAL FOREST
- INCORPORATED CITIES
- FEDERAL AID PRIMARY
- STATE FEDERAL AID SECONDARY
- LOCAL FEDERAL AID SECONDARY
- COUNTY ROADS
- FOREST DEVELOPMENT ROADS

GENERAL LEGEND

- DIVIDED HIGHWAY
- HIGH TYPE PAVED ROAD
- BITUMINOUS SURFACED ROAD, LOW TYPE
- GRAVEL SURFACED ROAD
- GRADED AND DRAINED ROAD
- UNIMPROVED ROAD
- PRIMITIVE ROAD
- U.S. HIGHWAY SYSTEM
- STATE HIGHWAY SYSTEM
- FEDERAL AID PRIMARY HIGHWAY SYSTEM
- FEDERAL AID SECONDARY HIGHWAY SYSTEM
- FEDERAL AID URBAN HIGHWAY SYSTEM
- END OF FEDERAL AID DESIGNATED ROUTE
- POINTS BETWEEN WHICH DISTANCES ARE MEASURED
- HIGHWAY GRADE SEPARATION
- TRAFFIC CIRCLE
- CLOVER LEAF
- SUSPENSION BRIDGE
- TRUSS BRIDGE (STEEL, WOOD)
- HIGHWAY BRIDGE, GENERAL
- HIGHWAY TUNNEL
- ROAD IN COURSE
- RAILROAD ON STREET OR ROAD
- CULTURAL FEATURES SHOWN OUT OF POSITION
- RAILROAD
- RAILROAD STATION
- RAILROAD CROSSING
- RAILROAD ABOVE
- RAILROAD BELOW
- RAILROAD BRIDGE
- RAILROAD TUNNEL
- STATE LINE
- COUNTY LINE
- URBAN BOUNDARY (AT CORPORATE LIMITS)
- NATIONAL FOREST BOUNDARY
- NATIONAL MONUMENTS
- NATIONAL PARKS
- INDIAN RESERVATIONS
- WIDE STREAM
- NARROW STREAM
- INTERMITTENT STREAM
- IRRIGATION DITCH
- LEVEL OR DIKE
- LEVEL OR DIKE WITH ROAD
- GROUP OF MIXED CULTURAL FEATURES CLOSELY SPACED
- MOUNTAIN RANGE, MESA OR BUTTE
- MILITARY AIRFIELD
- AIRPORT, COMPLETE FACILITIES
- AIRPORT, LIMITED FACILITIES
- LANDING AREA OR STRIP
- AIRWAY LIGHT BEACON, GENERAL
- AIRPORT, WITH BOUNDARY
- MARSH OR SWAMP LAND
- STATE CAPITAL
- COUNTY SEAT
- CITY OR VILLAGE CENTER
- FARM UNIT
- VACANT DWELLING UNIT
- HOME OR GROUP OF DWELLINGS
- COMBINED DWELLING AND STORE
- BUSINESS ESTABLISHMENT
- VACANT SAWMILL STATIONARY
- POST OFFICE
- POWER PLANT
- POWER SUBSTATION
- TV RELAY STATION
- RADIO STATION (WITH CALL LETTERS)
- RADIO RANGE STATION
- STATE ROAD SHIELD
- CEMETERY
- SEASONAL DWELLING
- SEASONAL DWELLINGS CLOSELY SPACED
- GRAVEL PIT (COMMERCIAL)
- WATER TANK
- TOWNHALL
- HOTEL, INN
- SCHOOLHOUSE
- CHURCH
- WEIGHT STATION
- HOSPITAL
- FACTORY OR INDUSTRIAL PLANT
- SEASONAL INDUSTRY
- GARBAGE OR RUBBISH DUMP
- CORRECTIONAL INSTITUTION
- SEWAGE DISPOSAL PLANT
- PUMPING STATION (WATER)
- GRAIN ELEVATOR
- BEET QUARRY
- GREENHOUSE
- NURSERY
- OIL OR GAS WELL
- OIL OR GAS FIELD
- OIL TANK
- PUMPING STATION (OIL OR GAS)
- GROUP OF STORAGE TANKS
- PICNIC GROUND
- PLAY GROUND, BALL FIELD, ETC.
- BATHING BEACH OR SWIMMING POOL
- CAMP SITE, NO PERMANENCE
- SCENIC SITE
- TOURIST COURT OR MOTEL
- CAMP OR LODGE, PERMANENT
- SPRINGS
- STATE HOUSE
- FOREST RANGER STATION
- GUARD STATION (SEASONAL)
- FISH HATCHERY
- GOLF GROUND OR COUNTRY CLUB
- AMUSEMENT PARK OR HALL
- FAIR GROUND, RACE COURSE, SPEEDWAY
- DRIVE-IN THEATRE
- PREHISTORIC RUIN, MESA OR BUTTE
- GATE ACROSS ROAD
- WELL (WATER)
- WINDMILL
- LAKE, RESERVOIR, OR POND
- LAKE, RESERVOIR, OR POND WITH DAM
- DRY LAKE SUBJECT TO FLOOD
- PROMINENT ELEVATION
- TRANSMUTATION STATION
- BENCH MARK

KEY TO THE NUMBERING OF SECTIONS

|    |    |    |    |    |    |    |
|----|----|----|----|----|----|----|
| 1  | 2  | 3  | 4  | 5  | 6  | 7  |
| 8  | 9  | 10 | 11 | 12 | 13 | 14 |
| 15 | 16 | 17 | 18 | 19 | 20 | 21 |
| 22 | 23 | 24 | 25 | 26 | 27 | 28 |
| 29 | 30 | 31 | 32 | 33 | 34 | 35 |
| 36 |    |    |    |    |    |    |



# GENERAL HIGHWAY MAP CACHE COUNTY UTAH

PREPARED BY THE  
UTAH STATE ROAD COMMISSION  
HIGHWAY PLANNING DEPARTMENT  
IN COOPERATION WITH THE  
U.S. DEPARTMENT OF COMMERCE  
BUREAU OF PUBLIC ROADS

SCALE  
1955

GENERAL HIGHWAY MAP APPROVED MAY 15, 1955